

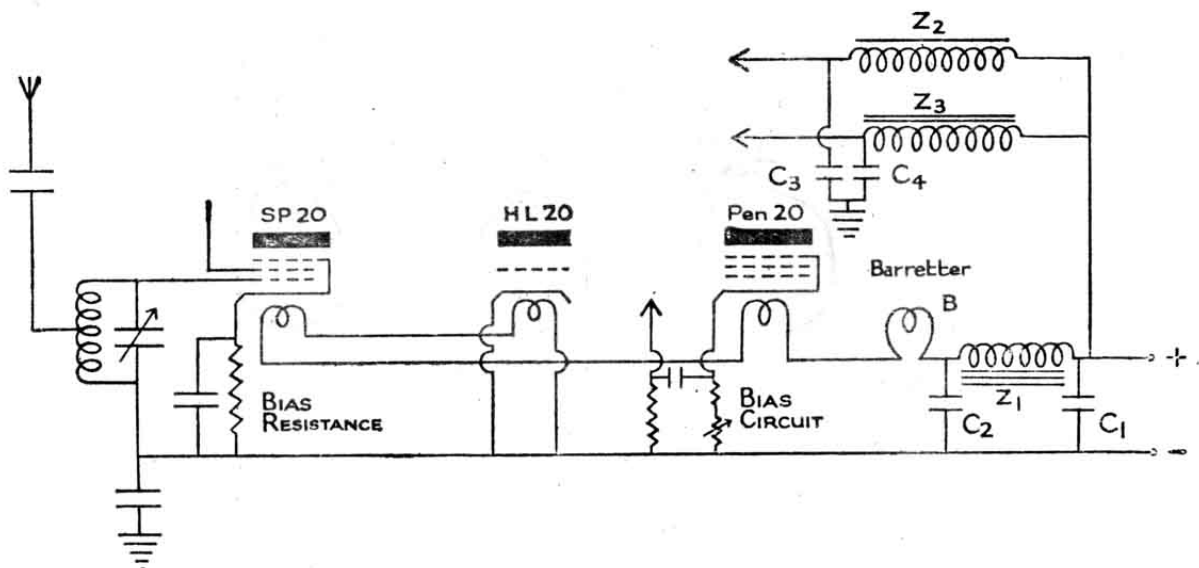
MULLARD

INDIRECTLY-HEATED D. C. MAINS VALVES

The range of Mullard indirectly-heated D.C. mains valves, full data concerning which is given on pages 47 to 52 comprises a number of high efficiency types suitable for all standard receiver circuits.

The heaters of these valves are of the low consumption types, rated at exactly $\cdot 18A.$ each. These heaters are intended for operating direct from the D.C.

achieving this is to connect a "barretter" or regulator lamp in series with the heaters. The use of such a lamp ensures that fluctuation in mains voltage over fairly wide limits causes no variation in the heater current. In addition, the use of a suitable barretter avoids the need for a line resistance in the heater circuit to absorb the difference between the full mains voltage



mains supply and must be connected in series, the voltage drop across each heater being approximately 20 volts. It is essential that the heater current be maintained absolutely constant at $\cdot 18A.$ The most satisfactory method of

and the voltage drop across the heaters in series.

THE RECEIVER CIRCUIT.

From a receiving point of view a circuit employing Mullard D.C. mains valves is precisely similar